

# Township Features



Gated Enclave



Central Park



Shopping Mall



Odyssey Club



Sentrum Offices



Srihari Global School



Multispecialty Hospital



Upcoming Hotel



**BENGAL SHRISTI**

## Bengal Shristi Infrastructure Development Ltd.

(A joint venture between Asansol Durgapur Development Authority & Shristi)

Corporate Office:  
Plot No. X 1, 2 & 3, Block EP, Sector V, Salt Lake City,  
Kolkata - 700 091, Tel: +91 33 4020 2020, Fax: +91 33 4020 2099  
E-mail: contact@shristicorp.com  
Website: www.bengalshristi.com

Asansol Office:  
Sentrum Mall, 3rd Floor,  
Shristinagar Road,  
Asansol - 713305  
Mobile: 99038 33888

**shristinagar**  
Asansol

**TARANG**  
A wave of life

Designed for *luxury living*



On top  
of the world  
*Luxe Living*

Luxury living, contemporary spaces and refreshing nature views – all come together at Shristinagar Asansol -- a secured gated township, first-of-its-kind in Eastern India. The 90-acre integrated township, comes with a world of amenities for its residents - leisure club shopping mall with multiplex, multispecialty hospital, offices, hotel, and a school. Amidst Shristinagar's green expanse having 65% open space, you don't just buy a home, you buy an entire township!



# Site Plan

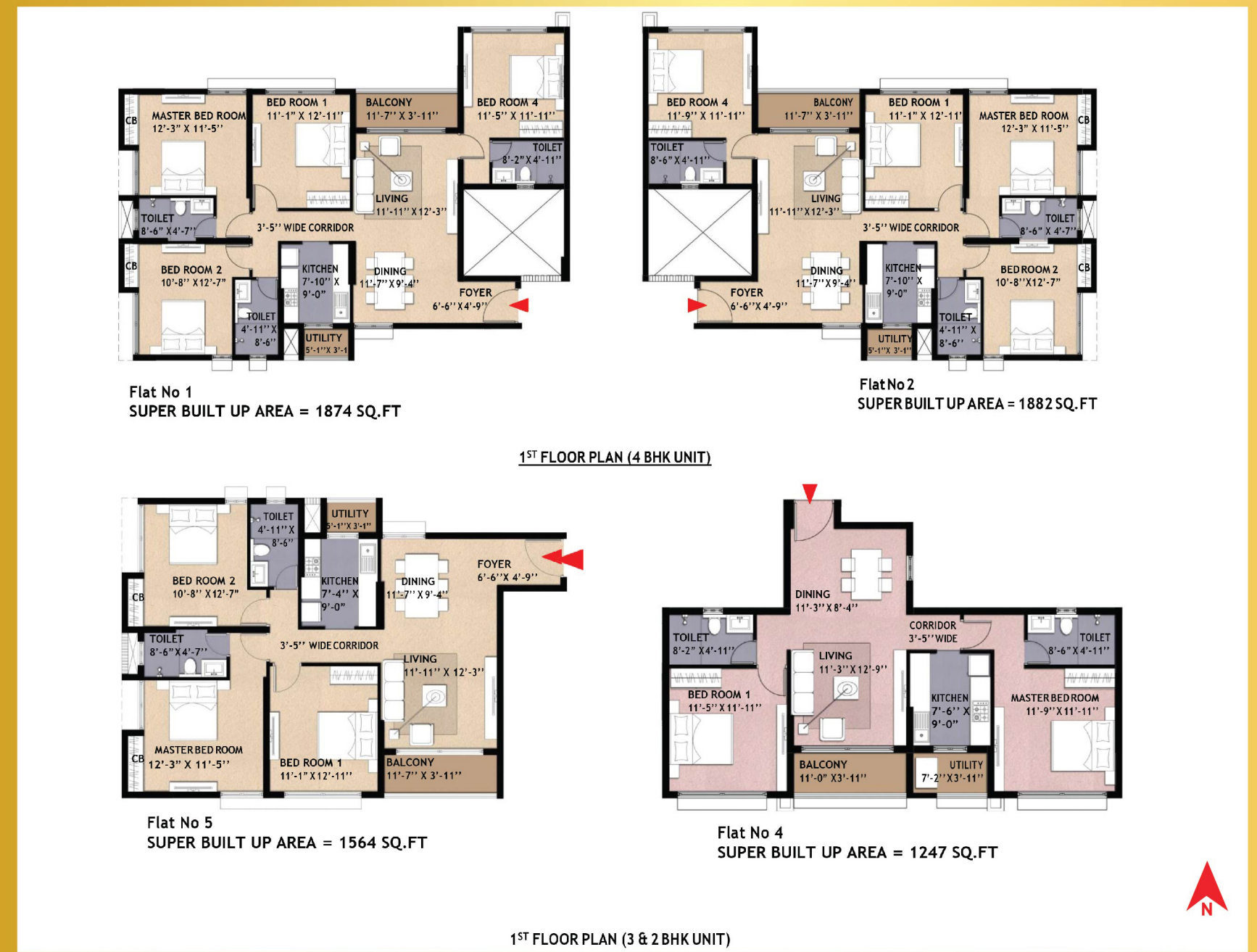
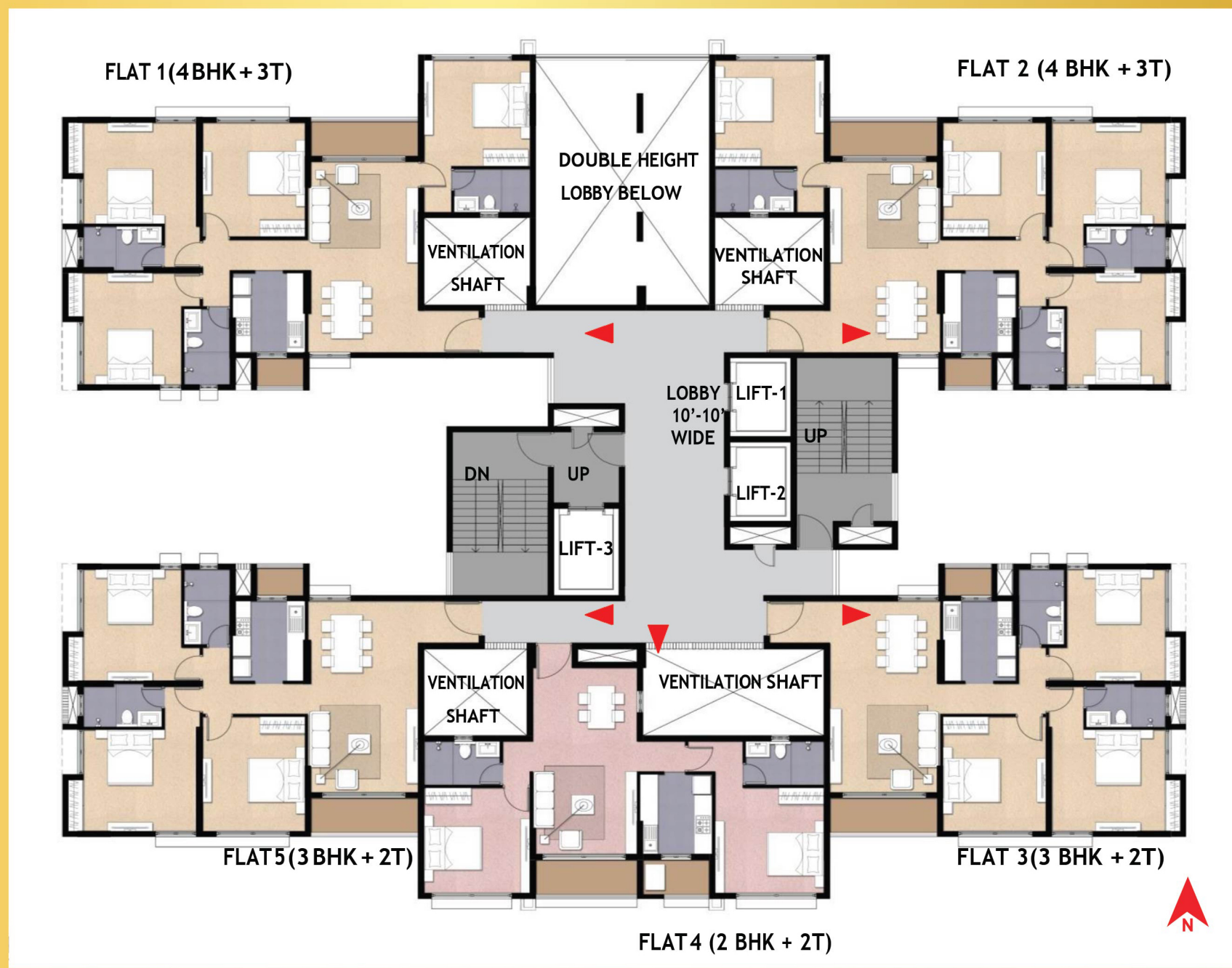
## Specifications

<b>Structure</b>	Earthquake resistant R.C.C framed construction
<b>Walls</b>	External walls 200 mm AAC Blocks. Internal walls 100 mm AAC Blocks
<b>Wall finishing</b>	
<b>Internal</b>	1 coat of primer on POP /putty over the plastered surface
<b>Corridor, Lobby</b>	2 coats of acrylic plastic paint over a coat of primer over POP surface
<b>External</b>	Paintings – 2 coats of weathershield paint over cement Primer
<b>Finishes</b>	
<b>Living &amp; Dining Room</b>	Vitrified tiles
<b>Bedrooms</b>	Vitrified tiles
<b>Kitchen</b>	
<b>Floor</b>	Anti skid ceramic tiles
<b>Dado</b>	Glazed ceramic tiles upto 2ft height above kitchen counter
<b>Counter</b>	Granite of required shade
<b>Sink</b>	Stainless sink with drain board
<b>Toilet</b>	
<b>Floor</b>	Anti skid ceramic tiles
<b>Dado</b>	Ceramic tiles upto lintel level on all sides
<b>WC</b>	European type- white
	Master Toilet - Wall hung
	Other Toilets - Floor mounted
<b>Washbasin</b>	Ceramic with bottle trap
	Master Toilet- Above counter basin
	Other Toilets- Below counter basin
<b>Hardware Fittings</b>	C.P.
	Provision of geyser point (without geyser) in all the toilets
<b>Doors</b>	Provision of hot & cold water mixer arrangement in shower and washbasin
<b>Window</b>	Modular doors/ panelled main entrance door, others primer finished flush doors
<b>Balcony Railings</b>	Powder coated/Color Anodised matt finish aluminium sliding/ casement window
<b>Electricals</b>	MS railings
	Concealed wiring with PVC conduits and modular switches of reputed brand. AC Point in all bedrooms, living rooms. Provision of Wifi connection at Living room and TV connections in Living & Master bedrooms
<b>COMMON AREAS</b>	
<b>Lobby</b>	Vitrified Tiles/ Marble
<b>Staircase</b>	Kota/ Cement / Tiles
<b>Corridors</b>	Vitrified Tiles
<b>Services, Servant's room &amp; Toilet</b>	Ceramic tiles
<b>Basement &amp; still floor car parking</b>	Cement Finish
<b>Lift</b>	3 Automatic Lifts of reputed brand in all the buildings

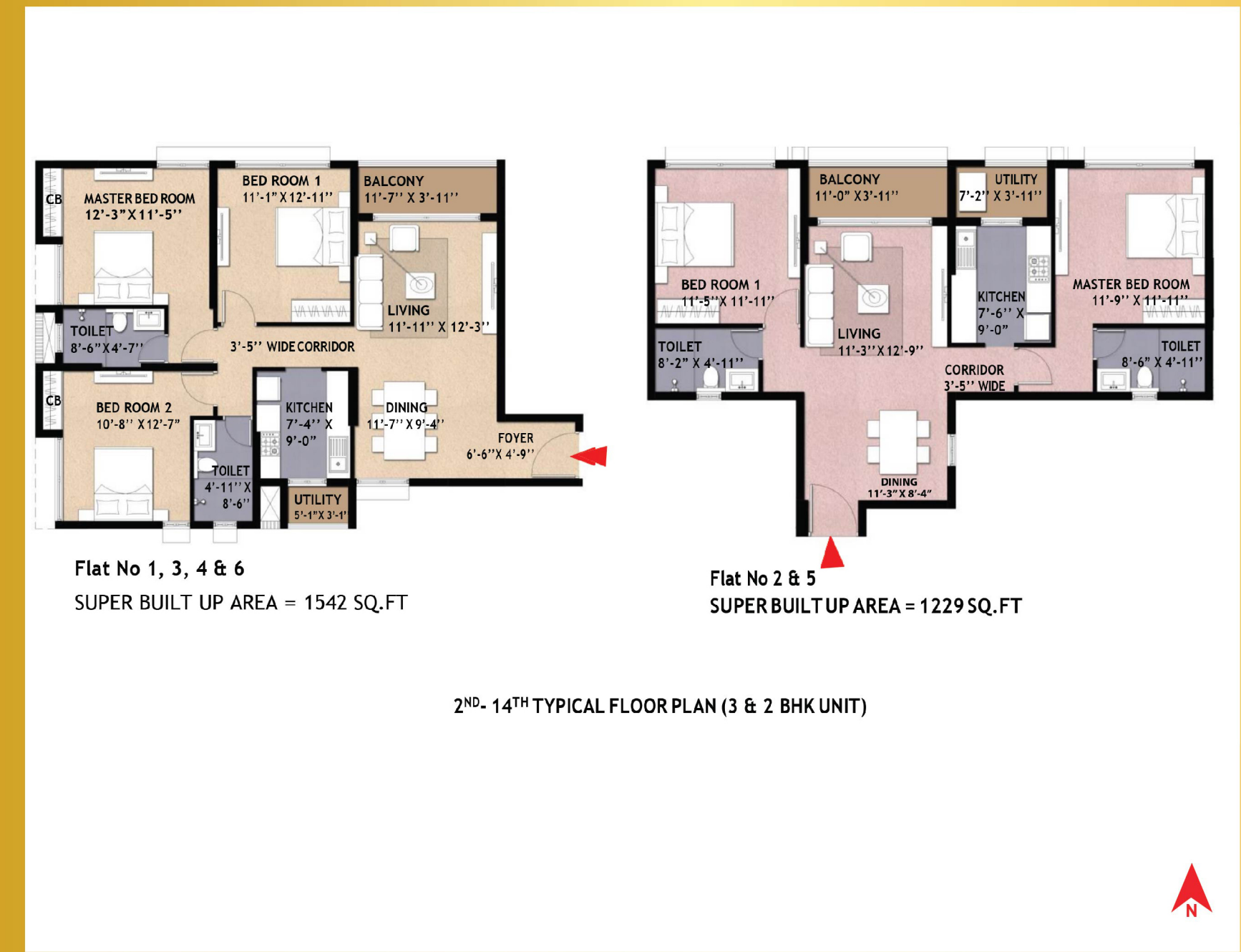
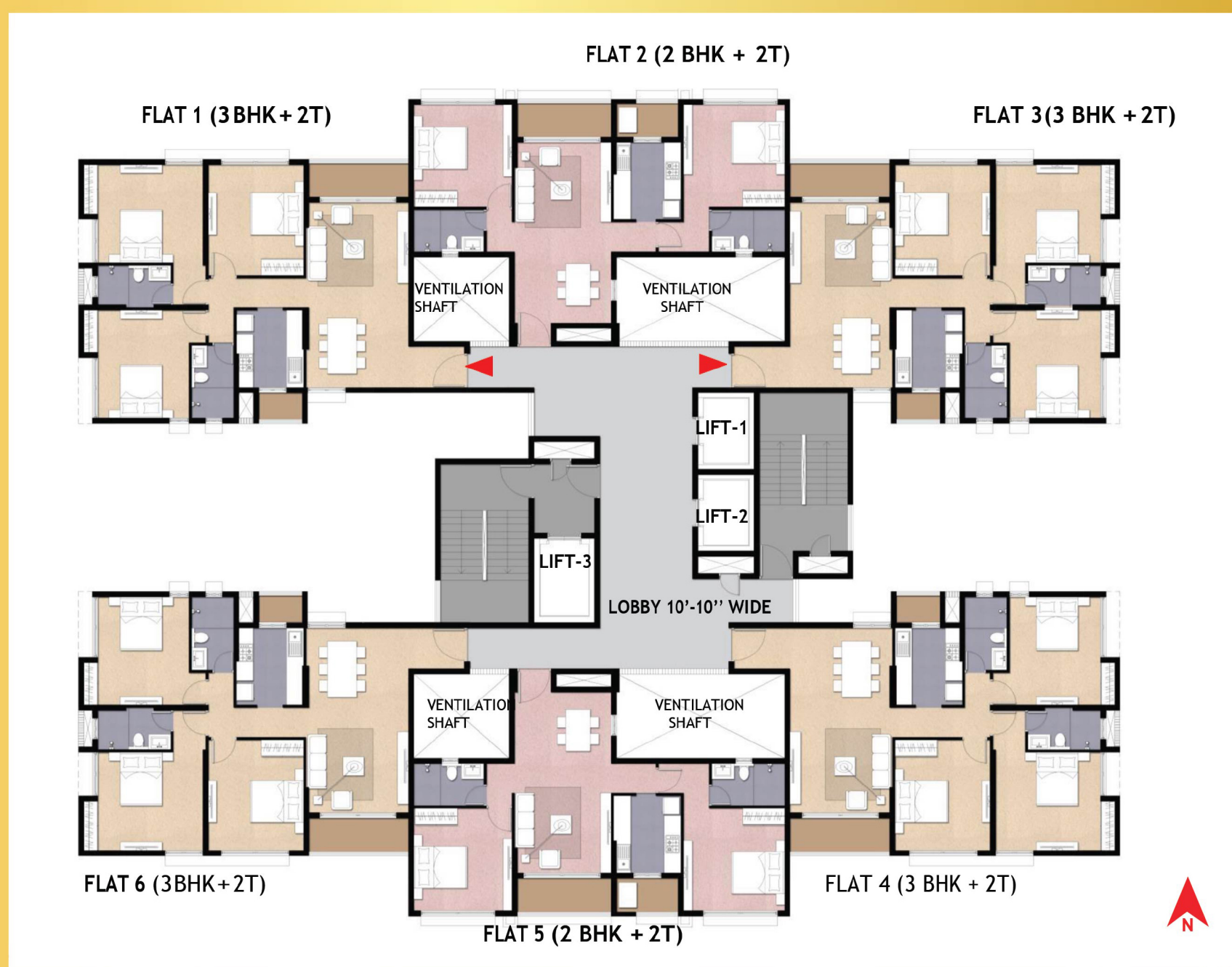




## 1st Floor Plans



## 2nd to 14th Floor Plans



## 8th to 13th Refuge Floor Plans

