



WELCOME TO LIFE

VISION

To evolve paradigms of urban **living** and **lifestyle** that create a fusion of Indian wisdom blended with the cutting edge technology...

MISSION

To achieve and develop holistic environment for generations to come, which are beyond today's imagination.

BACKGROUND

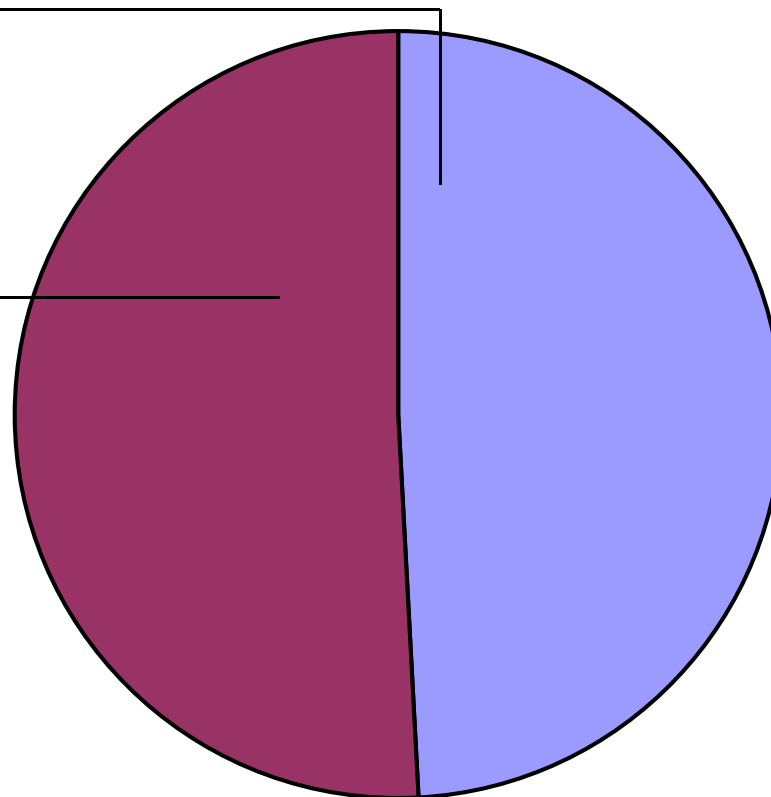
- Leading Construction and Infrastructure Development Company
- Started commercial operations in 1999
- Construction Activities – Roads, power, buildings, urban water systems and others
- Infrastructure Development – Townships, logistic hub, hotels and others
- Infrastructure Consultancy Services
- Joint Ventures under Public – Private Partnership model with various State & Central Govt. organizations
- Listed on Bombay Stock Exchange & Calcutta Stock Exchange
- **Currently handling Projects worth approx. US \$ 1 billion**



SHARE HOLDING PATTERN

Promoters
53.02%

Public
46.98%



BOARD OF DIRECTORS

- **Dipak Kumar Banerjee, Chairman**

Mr. Banerjee, Chartered Accountant, by profession, was initially associated with Unilever Group of Companies in India & UK. He has over three and half decades of experience, particularly in the field of mergers, acquisitions, corporate restructuring and disposals, apart from financial and accounting area. He is also on the Board of many reputed companies like Tata Metaliks Limited, D.I.C. Limited, TM International Logistics Limited, Tata Sponge Iron Limited, Tata Metaliks Di Pipes Limited, etc.

- **K. N. Bhandari**

Mr. Bhandari was the former Managing Director cum Chairman of New India Assurance Company Ltd. & United India Insurance Company Ltd. and has vast experience in the field of finance, management and insurance. He is also on the Board of many reputed companies like Andhra Cement Ltd, Agriculture Insurance Company Ltd, Kenbee Consultants Limited, etc.

- **Vinod Juneja**

Mr. Juneja has immense knowledge and experience in the Banking sector. He was the former Deputy Managing Director of The Bank Of Rajasthan Ltd. He is also on the Board of several companies like Binani Metals Limited, Shyam Telecom Limited etc.

BOARD OF DIRECTORS

- **S. P. Ghosh**

Mr. Ghosh has enormous experience in the field of finance, investment, regulation and training due to his association with Reserve Bank of India for more than four and half decades. He was an Executive Director of National Housing Bank, Senior Financial Analyst in NABARD and was also associated with Asian Development Bank and CITI Bank. He is also on the Board of several companies.

- **Sunil Jha, Managing Director**

Mr. Sunil Jha, Chartered Accountant by profession, has over 25 years of experience in Infrastructure Development & other Industries. He has been associated with Shristi from last 12 years and has held various leadership positions in the Company. He is also the Managing Director of Shristi Housing Development Limited which is the flagship development company of Shristi Group.

- **Braja Behari Mahapatra**

Mr. Mahapatra, retired as Additional Chief Secretary, Government of West Bengal, Cadre in I.P.S. and I.A.S. and has vast experience in Administrative functions. He also served as the Past Chairman of Port Trust of India & National Textiles Corporation and has won various awards including the Best Port Chairman Award & Uddyog Rattan Award.



AREA OF OPERATIONS

CONSTRUCTION

Roads
Power
Buildings
Urban Water
Systems
Hospital

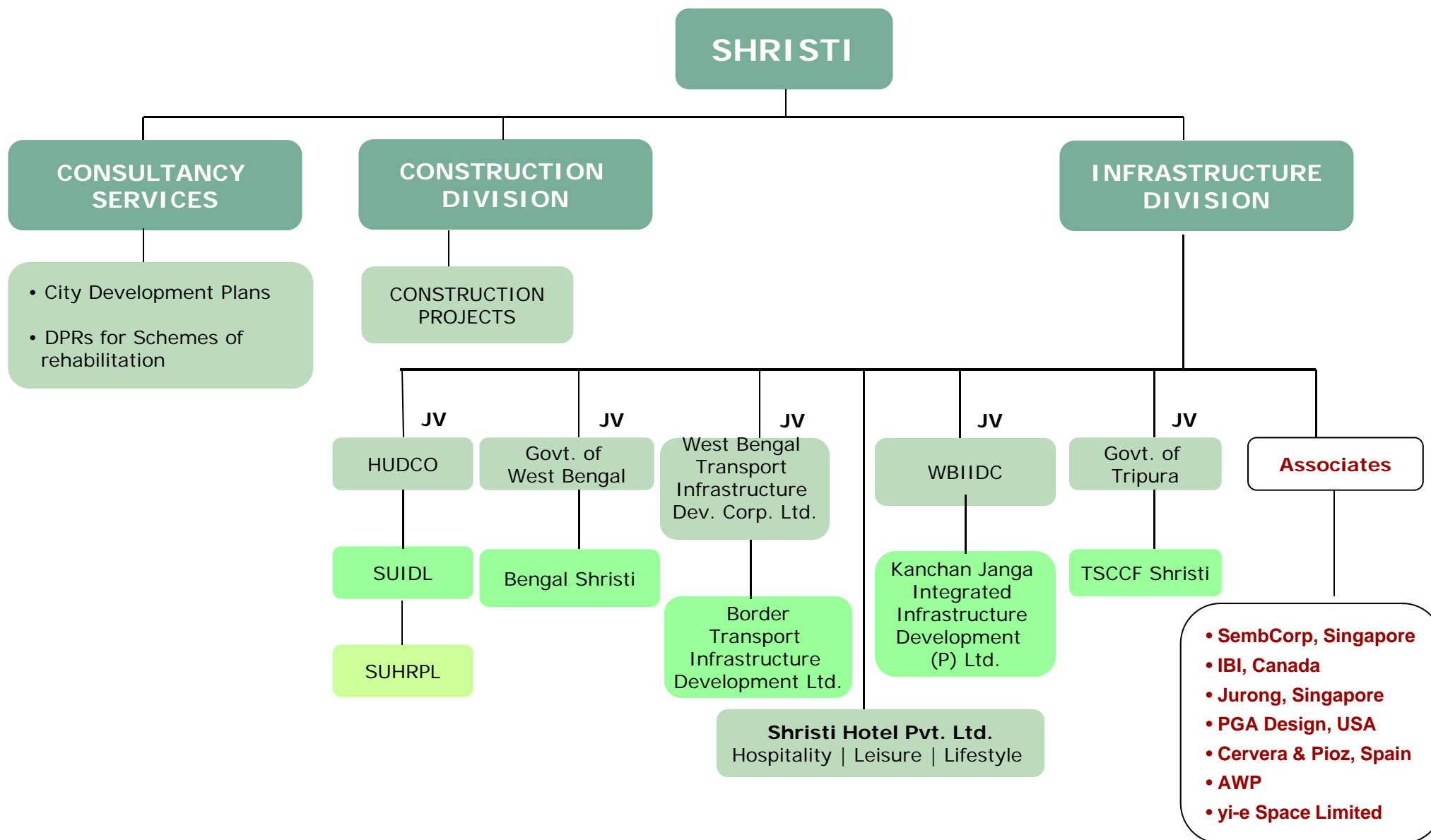
INFRASTRUCTURE DEVELOPMENT

Integrated Townships
Retail Malls
Hospitality
Commercial &
Residential Complex
Healthcare
Industrial Parks & SEZs
Logistics Hub

INFRASTRUCTURE CONSULTANCY

City Development
Plans
DPR for
Schemes of
Rehabilitation
DPR for Urban
Development

ORGANIZATION CHART



CONSTRUCTION COMPLETED PROJECTS

- State Highway 7 in Bardhaman & Hoogly districts for PWD
- Road & Bridge over Krishnapur Canal for NBCC Ltd.
- Road from Bandangacha to Syamsunder in Burdwan Zila
- Road from Bulandi to Kanaria in Hoogly District
- Library for R.E. College Durgapur
- Phase II of University Institute of Technology for Bardhaman University
- Effluent treatment along with sewage treatment plant for EPIP, Durgapur
- Kurseong Sub-divisional hospital, Darjeeling
- Earth embankment work at Tehri Dam for Jai Prakash Industries Ltd
- Substations at New Delhi for Reliance Energy Ltd
- Eye Hospital at Haldia
- Low Dam Project at Teesta
- Water Supply Project for Kolkata Municipal Corporation



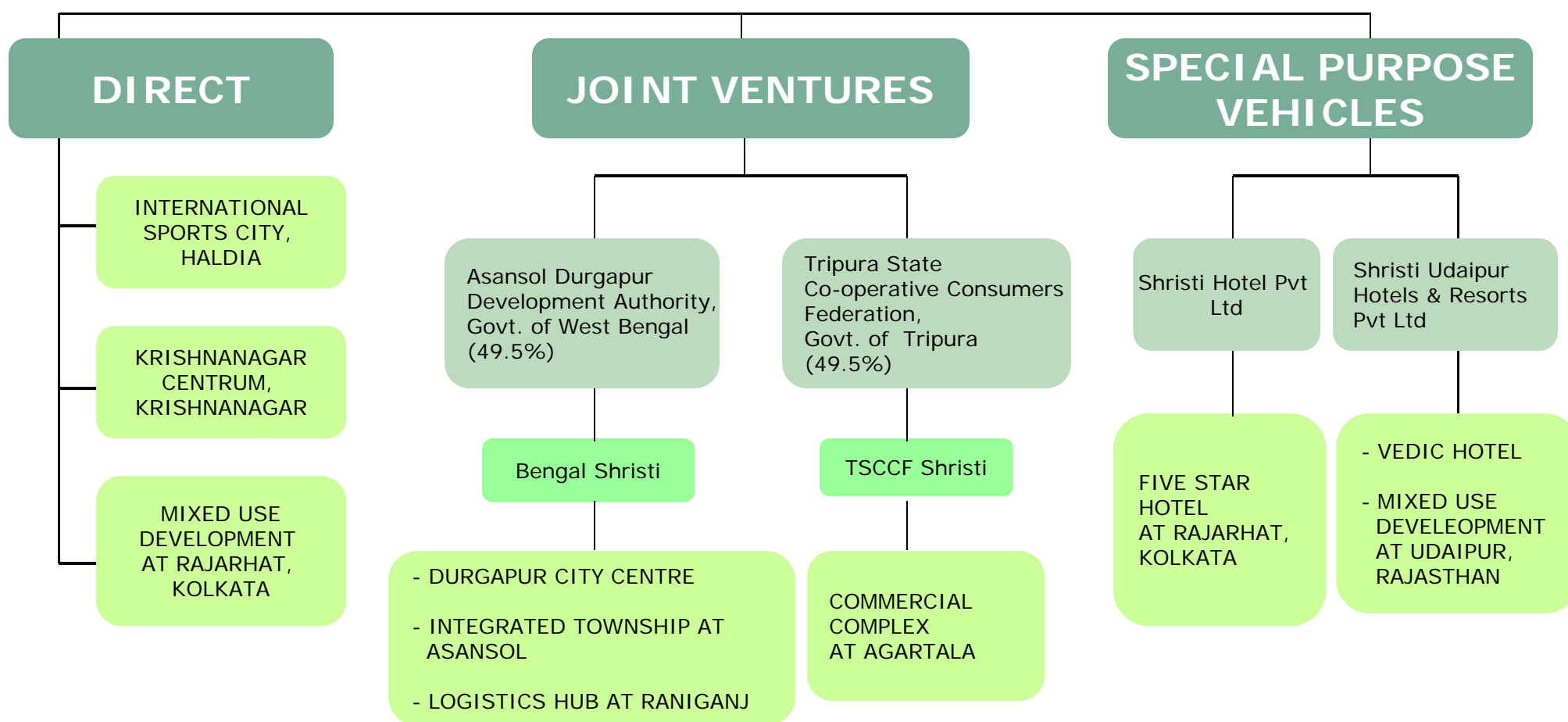
CONSTRUCTION

CURRENT PROJECTS

- Housing Units with complete external services, roads, drainage etc in Bareilly
- Housing Units for Ministry of Defense in Bhopal
- Five Star hotel at Rajarhat, Kolkata
- Office Building at Tangra, Kolkata
- School at Rajarhat, Kolkata
- Road projects at various places
- Five Star Hotel and Mall in Udaipur



INFRASTRUCTURE DEVELOPMENT



THE ARENA, INTERNATIONAL SPORTS CITY

INTEGRATED TOWNSHIP

Location

National Highway - 41, Haldia, West Bengal

Project Description

International Sports City is an integrated township spread over 65 acres with an International multi functional Stadium. The International Sports City has a Lifestyle Residential Estate with towers going upto 13 floors. The Residential Estate provides housing to 2500 families with built up area of about 3 million sq.ft. Along with the Residential, the project also has shopping mall with Multiplex, business hotel, healthcare facility, commercial area and educational facility

Total Built-up Area

2.8 Million Sq. Ft.

Architect

Kerr & Associates



KRISHNANAGAR CENTRUM

COMMERCIAL & RESIDENTIAL COMPLEX WITH RETAIL MALL

Location

National Highway – 34, Krishnanagar, West Bengal

Project Description

The project is spread over 4.5 Acres including a natural water body. It consists of 3 premium housing towers (13 storied each) covering 300,000 sq. ft. of built-up area, lifestyle mall and commercial complex covering 150,000 sq. ft., business hotel over 40,000 sq. ft. and leisure club over 10,000 sq. ft.

Total Built-up Area

545,000 Sq. Ft.

Architect

Innate



DURGAPUR CITY CENTRE



COMMERCIAL & RESIDENTIAL COMPLEX WITH RETAIL MALL

Location

Located just off National Highway – 2, it is within easy reach of residents in major adjoining suburbs including Ranigunj, Asansol, Bardhaman, Burnpur, Bankura, Birbhum, Santiniketan & Dhanbad.

Project Description

Designed and planned by the leading architect firm Stein Mani Chowfla and Ortega Shah Steinmann & Associates, Durgapur City Centre houses a Commercial Plaza, Shopping Mall with Multiplex and a Lifestyle Residential Tower. It is a modern multi-utility, multi-facility urban plaza, spread over 4.5 acres and can be best defined as a mini world and confluence of shopping, commerce, entertainment, recreation, hospitality and lifestyle living. Lush green open space, beautiful landscaping, an open-air theatre provide the ultimate lifestyle experience .

Total Built-up Area

500,000 Sq. Ft.

Architects

Stein Mani Chowfla
OS 2 Architects



SHRISTINAGAR – THE NEW ASANSOL



INTEGRATED TOWNSHIP

Location

Kanyapur, Asansol, West Bengal

Project Description

The Mega Integrated Township at Asansol is spread over a total area of approximately 90 Acres. It comprises of Plotted Housing units, Group Housing Structures, Bungalows & Row Housing, Premium Residential Apartments, Commercial & Retail Area, I T Park, Resort cum Club. It will house approximately 5,000 families

Total Built-up Area

6 Million Sq. Ft.

Architects

Sembcorp, Singapore
SAA Architects, Singapore
Edifice Architects
OS 2 Architects



RANIGANJ SQUARE

LOGISTICS HUB

Location

The project is located on National Highway – 2 at Raniganj, West Bengal. Catering to large catchment, Raniganj Square will be the future logistic hub for the entire district.

Project Description

Contemporary designer outlook and services based on comfortability, luxury and versatility. Spread over 25 Acres Raniganj Square has a wholesale market, shopping mall with multiplex, commercial spaces, warehouses and godowns, auto mall, motel, truck terminal, service station, petrol pump, dhaba, weigh bridge and will provide integrated transport facilities at a common location.

Total Built Up Area

560,000 Sq. Ft.

Architect

Innate



VIPANI

5 STAR HOTEL & THE **V** - UDAIPUR

Location

Overlooking the perennial Goverdhan Sagar Lake, Udaipur, Rajasthan with breathtaking view of natural surroundings. Connected to Udaipur's main artery – the National Highway by straight accessible road. Excellent road, rail, and air connectivity with all major locations in the country.

Project Description

A Mixed-Use Development, with a Shopping, Hospitality, Culture, Health and Well-being and Entertainment option in one of India's most happening places, Udaipur.

Total Built-up Area

730,000 Sq. Ft.

Architects

CHAPMAN TAYLOR



FIVE STAR HOTEL COMPLEX

5 STAR HOTEL & THE V - KOLKATA

Location

The site for the proposed development is located at the eastern edge of the municipal limits of Kolkata, called 'Rajarhat'. The proposed site is the prime hotel location in the Central Business District of New Town, Kolkata.

Project Description

A Premium Five Star Hotel Complex in Rajarhat, Kolkata. A combination of Colonial Design & Modern Architecture integrated with all the Features & Facilities which one could expect in an International Standard Project. Tallest structure in the Eastern Region with the Bionic concept building, makes this a world class "Project of the future"

Total Built-up Area

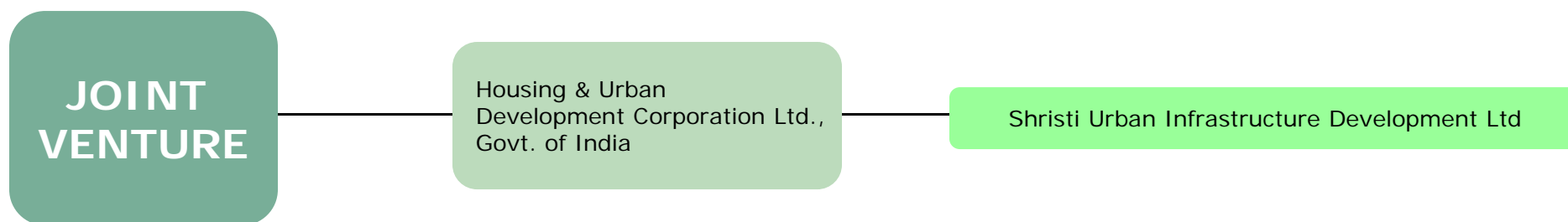
Five Star Hotel	- 625,000 Sq. Ft.
Complimentary Mixed Use Facilities	- 683,000 Sq. Ft.

Architects

Cervera & Pioz, Spain



INFRASTRUCTURE CONSULTANCY



COMPLETED PROJECTS

- City Development Plan of Gangtok City, Sikkim
- Preparation of DPR for Slum Rehabilitation in 12 towns in Uttar Pradesh

CURRENT PROJECTS

- Master Plans of 2 towns of Jharkhand
- Planning of District Centre at Pratap Nagar, Jaipur for Rajasthan Housing Board

SHRISTI...

CONSTRUCTING YOUR DREAMS INTO

DESTINATIONS OF THE FUTURE...

